



International Workshop on CLL
20-23 SEPTEMBER 2019 EDINBURGH

CD8⁺ T-cell exhaustion induced by leukemic cells mediates progression in Chronic Lymphocytic Leukemia (CLL)

Isabel Jiménez, PhD Candidate

ijimenez@vhio.net

Vall d'Hebron Institute of Oncology (VHIO)

Barcelona, Spain



No conflicts of interest to disclose



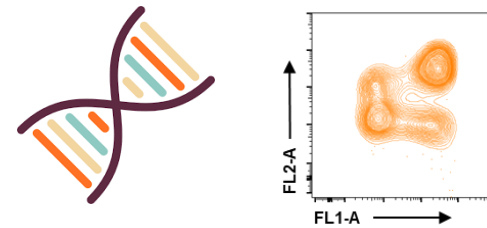
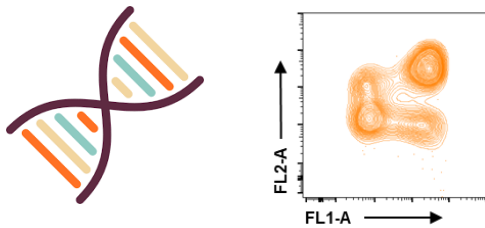
Do changes in the immune microenvironment lead to clinical progression in CLL?

Progressed CLL
n=19

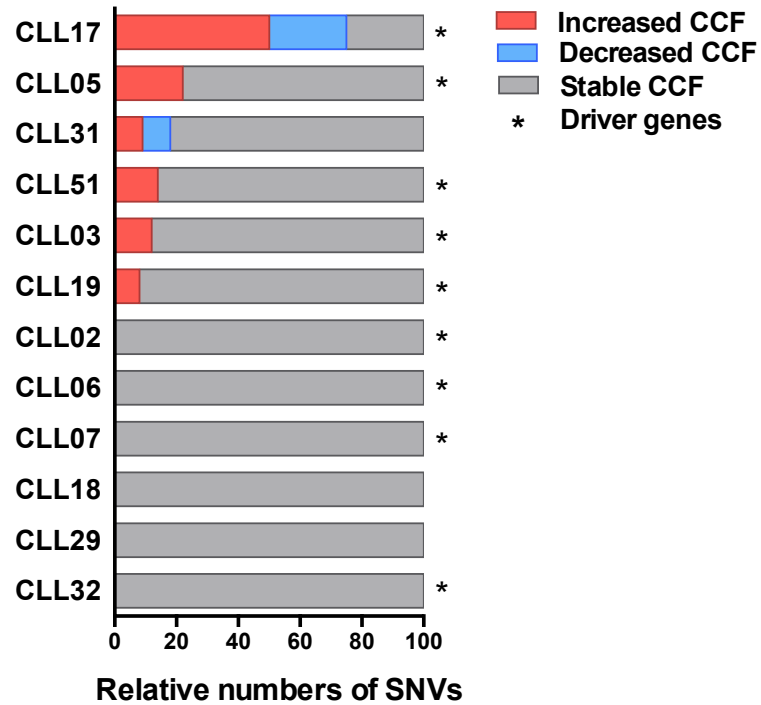
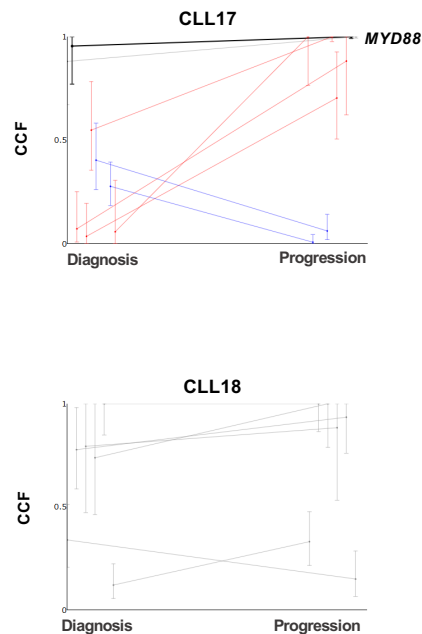
Non-progressed CLL
n=10

Diagnosis → **Progression**
Median TTP 29m

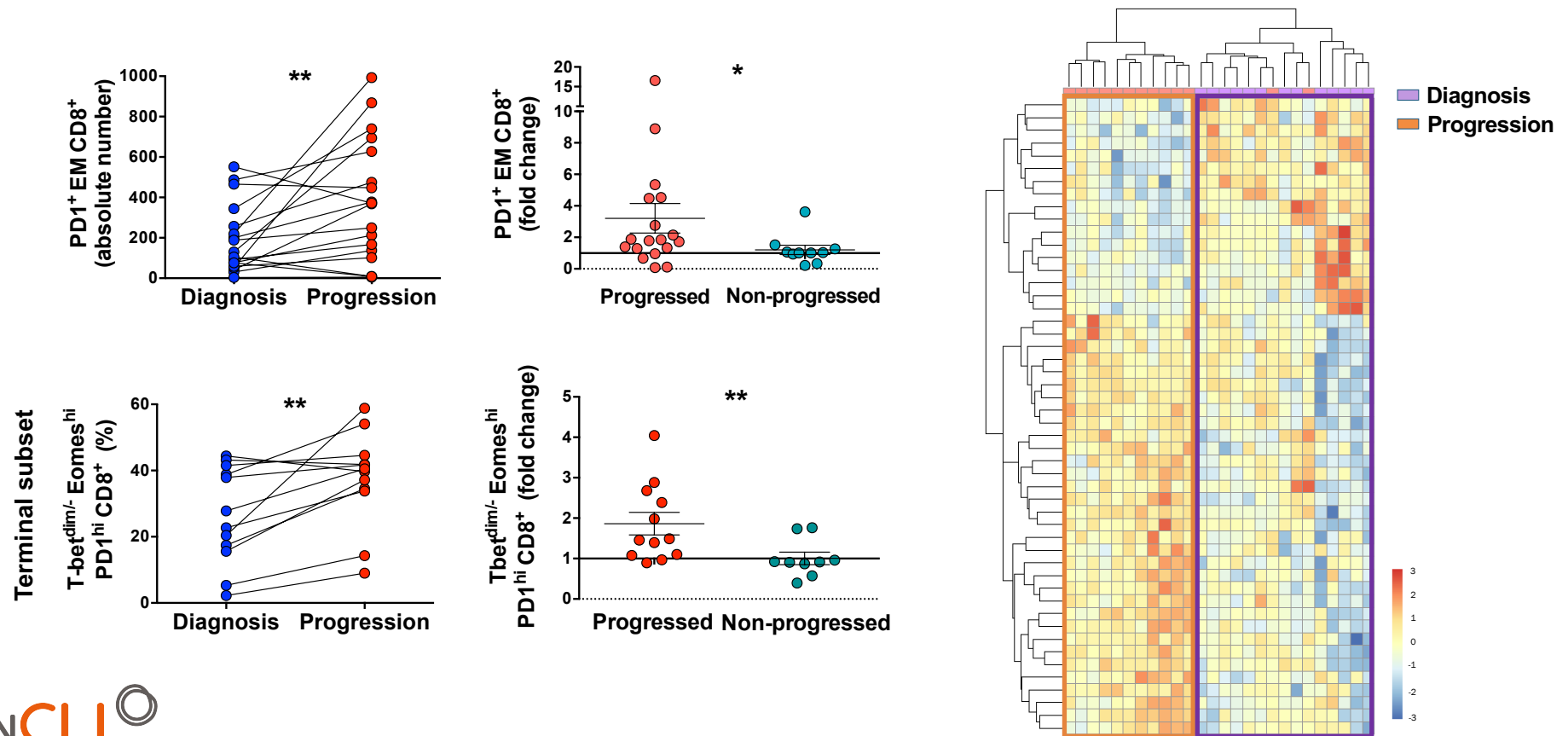
Diagnosis → **Follow-up**
Median TTFU 36m



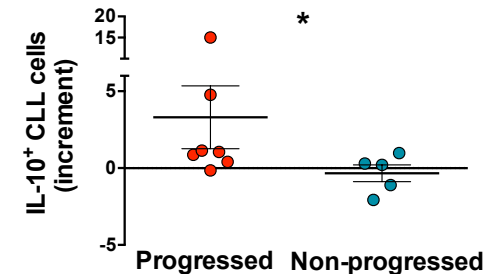
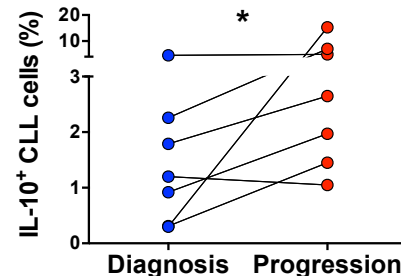
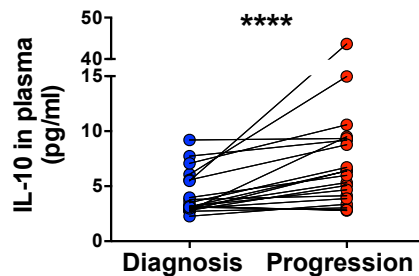
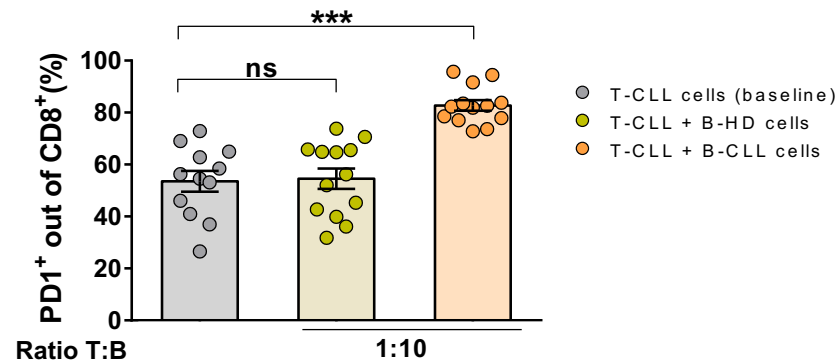
CLL cells show limited and non-recurrent genetic changes at clinical progression



CD8⁺ T cells from CLL patients are increasingly exhausted from diagnosis to progression



Soluble factors secreted by malignant cells, including IL-10, contribute to PD1 expression in CD8⁺ T cells at CLL progression



Conclusions

CLL progression is characterized by

- limited and non-recurrent genetic changes
- increased terminally exhaustion in CD8⁺ T cells
- inducement of PD1 in CD8⁺ T cells by soluble factors secreted by malignant B cells, including IL-10

More interesting data to share! **poster #2096**

Experimental Hematology Lab



Francesc Bosch, MD, PhD
Marta Crespo, PhD
Isabel Jiménez, PhD Candidate
Bárbara Tazón-Vega, PhD
Pau Abrisqueta, MD, PhD
Juan C. Nieto, PhD
Sabela Bobillo, MD
Carles Palacio, MD
Júlia Carabia, PhD

VHIO^R VALL D'HEBRON
Institute of Oncology

 **Vall d'Hebron**
Hospital